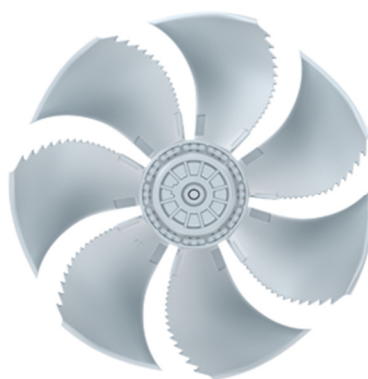


Movement by Perfection



The Royal League in ventilation, control and drive technology



Product documentation

Type
FN050-4EQ.4I.V7P1

Article number
142503

Distributed By:

ARGON[®]
DISTRIBUTORS LTD

Freephone 0508 634 341 | Fax 09 634 7417
7 Monier Pl, Mt Wellington, Auckland 1060, New Zealand

ZIEHL-ABEGG 

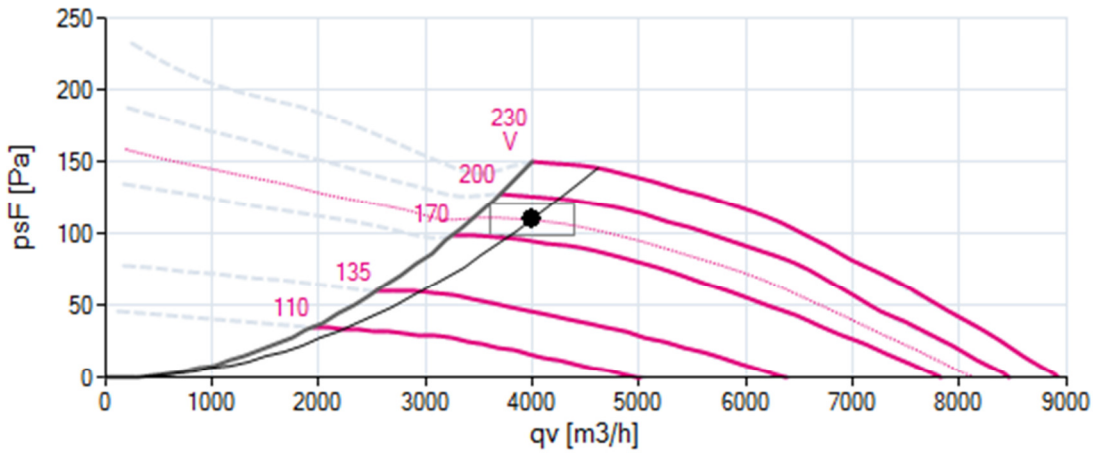
1. Product specification

Technical data

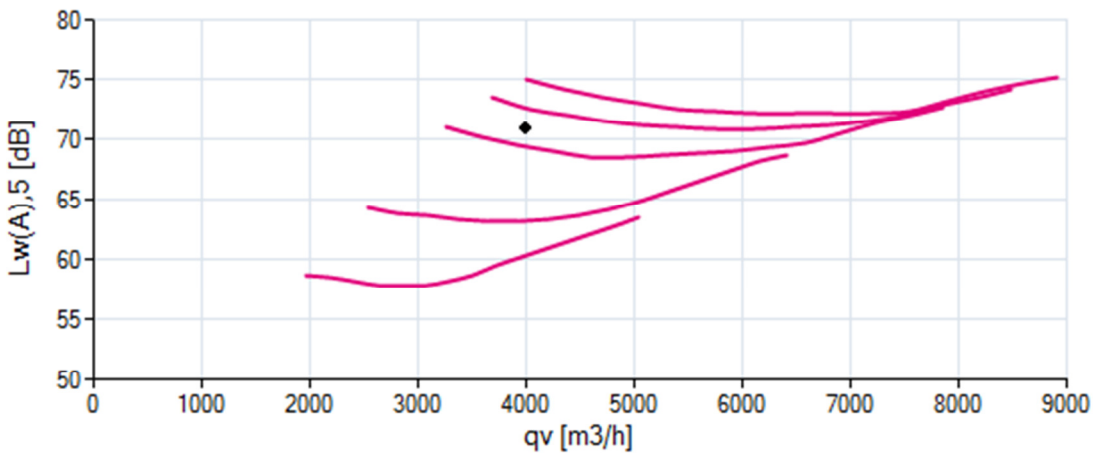
Article number	142503
Type	FN050-4EQ.4I.V7P1
Designation	Axial fan with sickle blades
Rated values	1~230V±10% 50Hz P ₁ 0.76kW 3.30A ΔI=5% 1230/min 16.0uF/400V 70 °C 1~230V±10% 60Hz P ₁ 1.05kW 4.60A ΔI=0% 1250/min 16,0uF/400V 50 °C
Electrical connection	Terminal box K62
Min. operating temperature °C	-25
Mounting type terminal box	Mounted on Stator
Type of protection	IP54
Thermal class	THCL155
Connection diagram	1360-104XA
Rating plate	1x fixed
Fitting position	H/Vu/Vo
Motor protection	thermal contact
Impregnation	Moisture and hot climate protection
Quality of bearings	ball bearing with long-time lubrication
Material Rotor	Aluminium
Painting rotor	Rotor 1 coat painted
colour rotor	RAL 9005 (jet black)
Material blades	Aluminium
Painting impeller	1 coat painted
Colour blades	RAL 9005 (jet black)
Guard grille type	ring grille
Other	Balancing quality G 4,0
Painting pipe	Bell mouth 1 coat paint
Colour pipe	RAL 9005 (jet black)
Painting mot.suspens	Motor suspension 1 coat paint
colour suspension	RAL 9005 (jet black)
Weight kg	18,90
ErP Data	Efficiency η_{statA} : 28.9 % Efficiency: $N_{actual} = 36.3 / N_{target} = 36^*$ *ErP 2013Does not comply with the stipulations of the ErP regulations

2. Characteristic Curve

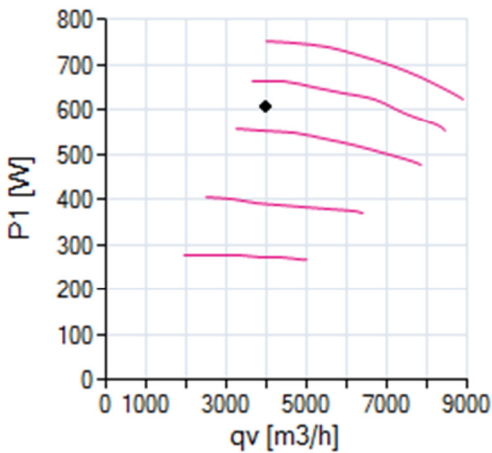
Air performance



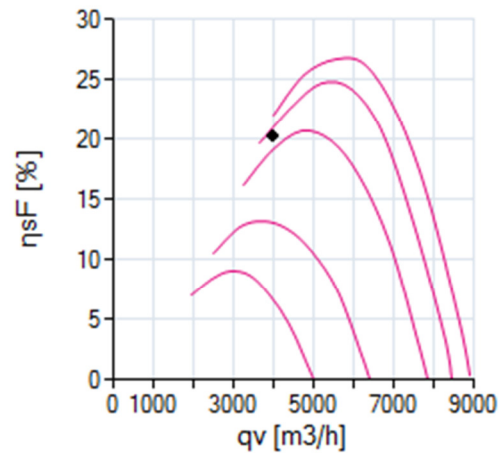
Acoustics



Power input



Efficiency

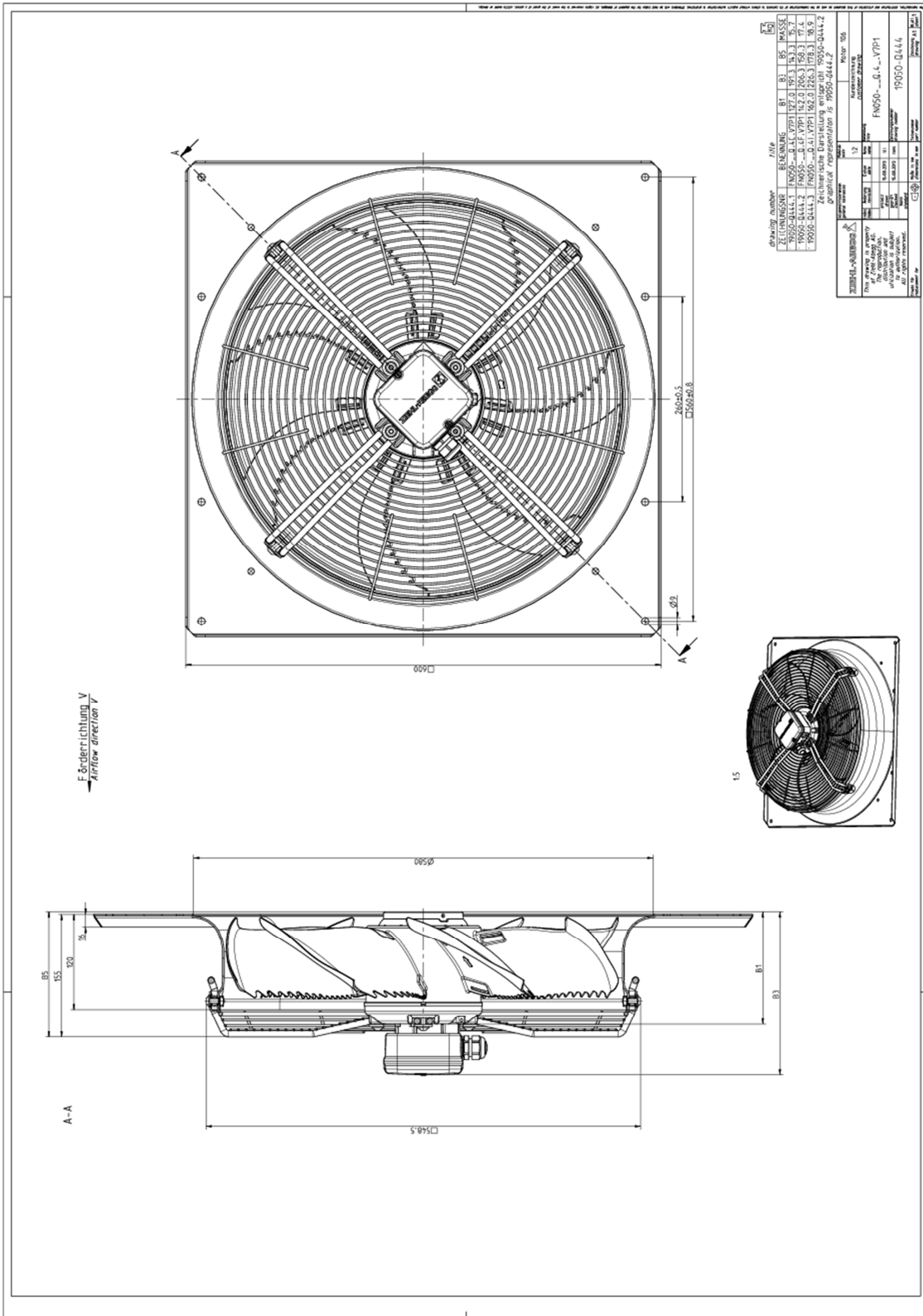


Gemessen in Volldüse ohne Berührschutzgitter in Einbauart A nach ISO 5801

Data of operating point

type	FN050-4EQ.4I.V7P1
article no.	142503
size [mm]	500
airflow volume (qV)	4000
pressure, stat. (psF)	110
pressure, tot. (pF)	129
SFP-value (PSFP)	566
electrical power input (P1)	606
efficiency, stat. (nF)	23,63
fan speed (n)	1074
acoustics, suction side (LW(A).5)	71
acoustics, pressure side (LW(A).6)	71
frequency (fBP)	50
voltage UDP	183
current (IDP)	3.39
mains supply	1~ 230V 50Hz
	4616
	146
guard grille	no

3. Drawing



Dimensions in mm

Shown drawing is just to show the dimensions of the fan.

www.ziehl-abegg.com
6/04/2016 4:10:19 PM

Movement by Perfection | Bewegung durch Perfektion

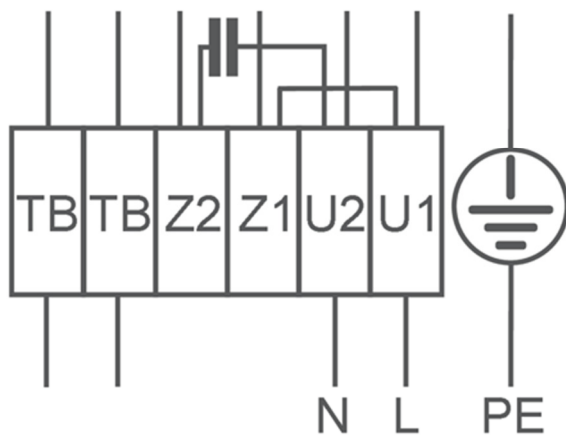
4. Connection diagram

1360-104XA

1~Motor with capacitor and thermostatic switch (if built in).

- U1 brown
- U2 blue
- Z1 black
- Z2 orange
- TB white

Clockwise rotation



5. EU-Declaration of conformity

EC-Declaration of conformity

as defined by the EC Low Voltage Directive 2006/95/EC, the EMC guideline 2004/108/EC, as well as ErP guideline 2009/125/EG.

The type of machinery:

- External rotor motor MK.., MW..
- Axial fan FA.., FB.., FC.., FE.., FF.., FS.., FT.., FH.., FL.., FN.., VR.., VN.., ZC.., ZF.., ZN..
- Centrifugal fan RA.., RD.., RE.., RF.., RG.., RH.., RK.., RM.., RR.., RZ.., GR.., ER..
- Cross-flow fan QK.., QR.., QT.., QD.., QG..

Motor type:

- Asynchronous internal or external rotor motor
- Asynchronous internal or external rotor motor with integrated frequency inverter, except EDP system
- Electronically commutated (EC) internal or external rotor motor
- Electronically commutated internal or external rotor motor with integrated EC controller, except EDP system

is developed, designed and manufactured in accordance with the EC Directives 2006/95/EC, 2004/108/EC and 2009/125/EC, on the own responsibility of

ZIEHL-ABEGG SE
Heinz-Ziehl-Strasse
D-74653 Kuenzelsau

The following standards are applied:

EN 60034-1:2010+Cor.:2010, EN 60204-1:2006, EN 60529:1991 + A1:2000, EN 61000-6-3:2007, EN 61000-6-2:2005

Compliance with the ErP Directive 2009/125/EC does not refer to external rotor motors MK.., MW..

All ErP-relevant information comprises measurements which are determined using a standardised measurement set-up. More details can be obtained from the manufacturer.

Compliance with the EMC Directive 2004/108/EEC only applies to this product if it is connected according to the operating instructions. If this product is integrated in a system or complemented and operated with other components (e.g., switching and control equipment), the manufacturer of or company operating the overall plant is responsible for compliance with the EMC Directive 2004/108/EEC.

The complete technical documentation is available.

22.11.2013

Dr. W. Angelis - Technical Director Air Movement
Division



ZA75-GB-12/13 Index 008

1

english

ZIEHL-ABEGG 

The Royal League Die Königsklasse



The Royal League in ventilation, control and drive technology

Intelligent control technology for any application

ZIEHL-ABEGG system capabilities:
Everything from a single source – perfectly matched for optimal performance

Please contact us. We would be pleased to design an individual solution for your requirements.

We would like to welcome you on our worldwide exhibitions. Please find our next exhibitions [here](#).

Distributed By:



Freephone 0508 634 341 | Fax 09 634 7417
7 Monier Pl, Mt Wellington, Auckland 1060, New Zealand