

ONGA®

JJ400

JUNIOR JET FARMMASTER PUMP JET ASSISTED PRESSURE PUMP



JJ400



FEATURES

Injectors to suit large range of applications.

Offset combinations available.

No moving parts down bore.

Shallow well lifts to 7.6m.

Deep well lifts to 27m.

Manual or automatic system.

Max. head - 52m.

Max. flow - 98lpm.

APPLICATIONS

- Domestic, industrial or rural pressure pump for use as a manual or an automatic pressure system.
- Stock watering, irrigation and water transfer.
- Option of a large range of water sources including tanks, bores, dams, creeks and rivers thanks to various injector combinations.

PUMP INFORMATION

Horizontal, single-stage, surface mounted centrifugal pump. Jet and venturi assisted performance with closed impeller for pumping debris free water. Cast iron injector housing and pump casing with 1½" BSP (female) inlet and ¾" BSP (female) outlet.

OPERATING CONDITIONS

Suitable for pumping clean non-aggressive liquids without solids or fibres in suspension.

Fluid:	Water.
Maximum water temperature:	55°C.
Minimum water temperature:	1°C.
Maximum ambient temperature:	40°C.

Distributed By:


ARGON
DISTRIBUTORS LTD

Freephone 0508 634 341 | Fax 09 634 7417
7 Monier Pl, Mt Wellington, Auckland 1060, New Zealand

ELECTRICAL DATA

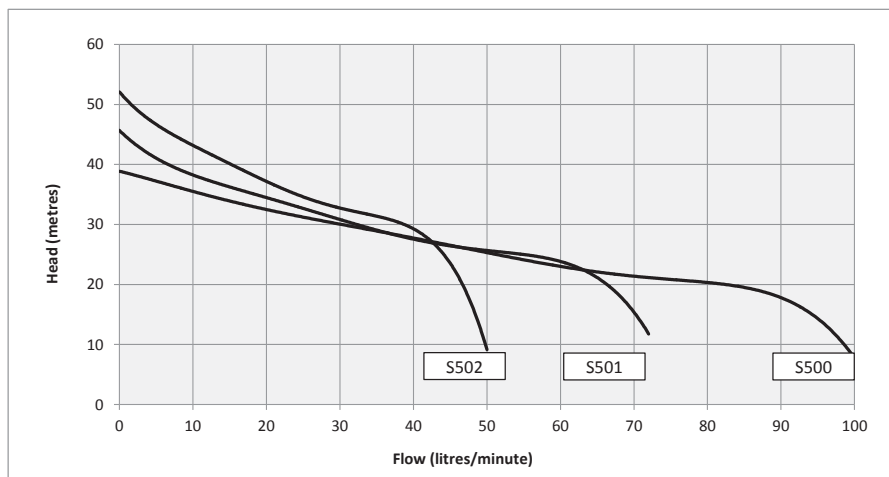
Type	Type of current	Voltage ± 10%	Frequency Hz	Motor rating kW		Nominal RPM	Full current	Locked rotor current	Motor protection	Insulation class	IP rating
				P1	P2						
JJ400	1-phase	230	50	1	0.75	2900	4.5 A	19 A	Auto	B	55

PERFORMANCE

Type	Injector model	Pressure switch setting (kPa)	Suction depth (m)	Total head in metres					Maximum pump pressure (kPa)
				15	21	27	34	40	
				Capacity (litres per minute)					
JJ400	S500	140-280*	0	98	70	40			380
			3	78	56	32		350	
			6	56	40	23		320	
			7.6	39	28	16		305	
	S501	210-350#	0	71	66	42	21		440
			3	57	53	34	17	410	
			6	40	38	24	12	380	
			7.6	28	26	17	8		
	S502	280-420*	0		47	42	24	14	505
			3		38	34	19	11	475
			6		27	24	14	8	445
			7.6		19	17	10	6	430

#Factory pressure switch setting. *Pressure switch adjustment

PERFORMANCE CURVE



Distributed By:

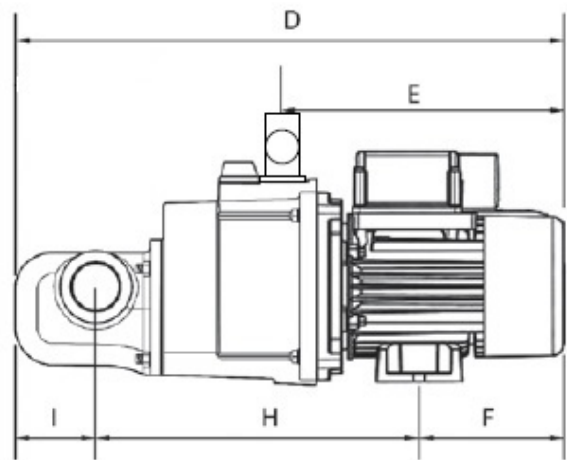
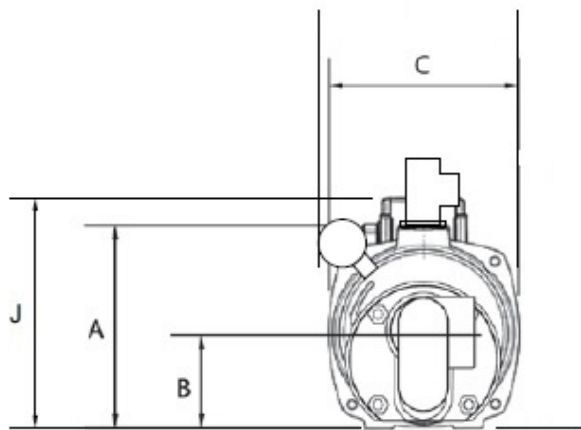
ARGON
DISTRIBUTORS LTD

Freephone 0508 634 341 | Fax 09 634 7417

7 Monier Pl, Mt Wellington, Auckland 1060, New Zealand

DIMENSIONS

Type	Maximum L x W x H	Weight approx.	Inlet	Pump outlet	Pressure kit outlet	Carton L x W x H	Packed weight
JJ400	510 x 180 x 220 mm	18 kg	1½" BSP (female)	¾" BSP (female)	1" BSP (female)	590 x 300 x 330 mm	19 kg



Pump not supplied with shallow well assembly.

Type	A	B	C	D	E	F	H	I	J
JJ400	190	90	180	525	255	140	305	80	220

DIMENSIONS

Component	Material
Pump casing	Cast iron
Impeller	Polycarb 20% glass filled
Baffle	ABS glass filled
Diffuser	Noryl
Priming/drain plug	Acetal
Shaft sleeve	Nylon
Mechanical seal	Carbon / ceramic
Motor shaft	Mild steel

Distributed By:

ARGON
DISTRIBUTORS LTD

Freephone 0508 634 341 | Fax 09 634 7417
7 Monier Pl, Mt Wellington, Auckland 1060, New Zealand