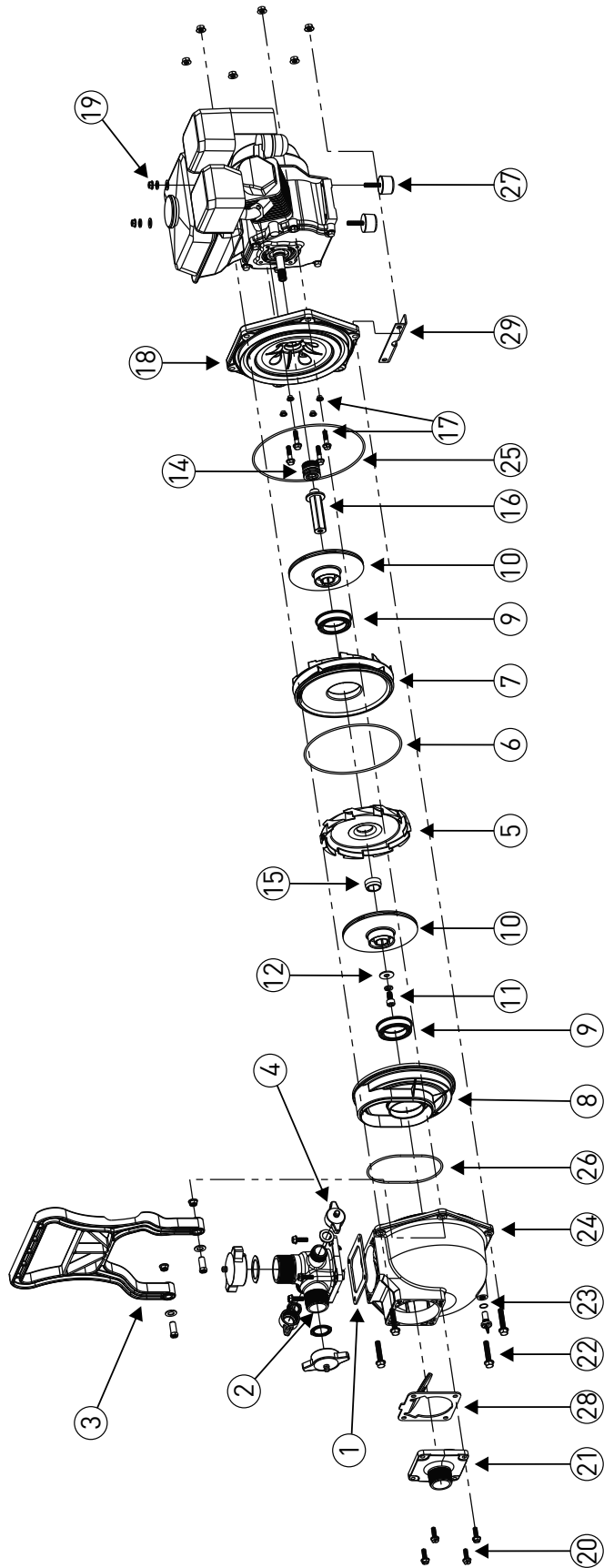


BlazeMaster Twin Stage Models



Drawings are indicative only, product appearance may change slightly.

PARTS LIST TABLE

BlazeMaster Twin Stage Models

MODEL PART NUMBER	BLAZEMASTER TWIN		
	BM55H	BM90H	BM70Y
	BM55BS	BM80BS*	BM70YE
	BM65H	BM90HE	BM10YE
	BM65BS	BM80BSE*	
	BM65HE	BM10BSE*	

REF NO.	COMPONENT DESCRIPTION	PART NO.		PART NO.		PART NO.	
1	GASKET - DISCHARGE	510960K	1PC	510960K	1PC	510960K	1PC
2	FLANGE - DISCHARGE 1½" BSP	410933S	1PC	-	-	-	-
	FLANGE - DISCHARGE 2" BSP	-	-	410943S	1PC	410943S	1PC
3	HANDLE	305590	1PC	-	-	-	-
NS	NUT - BUSH HANDLE	609010K	1PC	-	-	-	-
4	CAP & WASHER 1" BSP	800111	2PC	800111	2PC	800111	2PC
	CAP & WASHER 1½" BSP	800112	AR	-	-	-	-
	CAP & WASHER 2" BSP	800382	AR	800382	AR	800382	AR
5	DIFFUSER - INTERSTAGE	305538	1PC	305538	1PC	305538	1PC
6	O-RING DIFFUSER - INTERSTAGE	702261K	1PC	702261K	1PC	702261K	1PC
7	DIFFUSER - 2ND STAGE	305515	1PC	305515	1PC	305515	1PC
8	SUCTION COVER	305555	1PC	305555	1PC	305555	1PC
9	WEAR RING	510970K	2PC	510980K	2PC	510980K	2PC
10	IMPELLER - 5/8" SHAFT	511050K	2PC	-	-	-	-
	IMPELLER - 1" SHAFT	-	-	511060K	2PC	511060K	2PC
11	IMPELLER - SCREW	801367K	1PC	801367K	1PC	801367K	1PC
12	IMPELLER WASHER M10 x 30	801367K	1PC	801367K	1PC	801367K	1PC
	IMPELLER WASHER M10 x 40	-	-	801367K	1PC	801367K	1PC
13	WASHER SPRING - IMPELLER	801367K	1PC	801367K	1PC	801367K	1PC
NS	OVERHAUL KIT 3/4" (1,4,8,10,15 & 19)	801244	1PC	-	-	-	-
14	MECHANICAL SEAL KIT	801428	1PC	700270K	1PC	700270K	1PC
NS	VITON SEAL KIT ¾"	801364K	1PC	-	-	-	-
	VITON SEAL KIT 1"	-	-	801365K	1PC	801365K	1PC
15	SPACER SLEEVE 5/8" & ¾" SHAFT	608770K	1PC	-	-	-	-
	SPACER SLEEVE 1" SHAFT	-	-	608780K	1PC	608780K	1PC
16	STUB SHAFT 5/8"	608930K	1PC	-	-	-	-
	STUB SHAFT 1"	-	1PC	608950K	1PC	608950K	1PC
17	BOLT & SEAL KIT (Set/12)	800273K	1PC	800273K	1PC	800273K	1PC
18	YOKE ¾" BLAZEMASTER	305494S	1PC	-	-	-	-
	YOKE 1" BLAZEMASTER	-	-	305503S	1PC	305503S	1PC
19	NUTS - CASING	800092K	6PC	800092K	6PC	800092K	6PC
20	SCREW (PK/6) M8	702771K	1PC	702771K	1PC	702771K	1PC
21	FLANGE - SUCTION 1½" BSP	410853S	1PC	-	-	-	-
	FLANGE - SUCTION 2" BSP	-	-	410863S	1PC	410863S	1PC
22	BOLTS - CASING	702639	6PC	702639	6PC	702639	6PC
23	PLUG ¼" DRAIN (INC. O-RING)	800222	1PC	800222	1PC	800222	1PC
24	CASING	305483S	1PC	305483S	1PC	305483S	1PC
25	CASING O-RING	702216K	1PC	702216K	1PC	702216K	1PC
26	O-RING SUCTION COVER	705901K	1PC	705901K	1PC	705901K	1PC
27	ANTI VIBRATION FEET (SET/2)	801356K	1PC	-	-	-	-
28	GASKET - CLACKER ASSY.	511150	1PC	511150	1PC	511150	1PC
29	BRACKET SUPPORT	608960	1PC	608460*	1PC		
NS	ROLL FRAME (LARGE)	801373K	1PC	-	-	-	-
NS	FIRE FIGHTING HOSE KIT (1 1/2" SUCTION)	701124	1PC	-	-	-	-
NS	FIRE FIGHTING HOSE KIT (2" SUCTION)	-	-	701126	1PC	701126	1PC

ENGINE DRIVE

Genuine Onga Spare Parts Supplied By:



Freephone 0508 634 341

7 Monier Pl, Mt Wellington, Auckland 1060, New Zealand