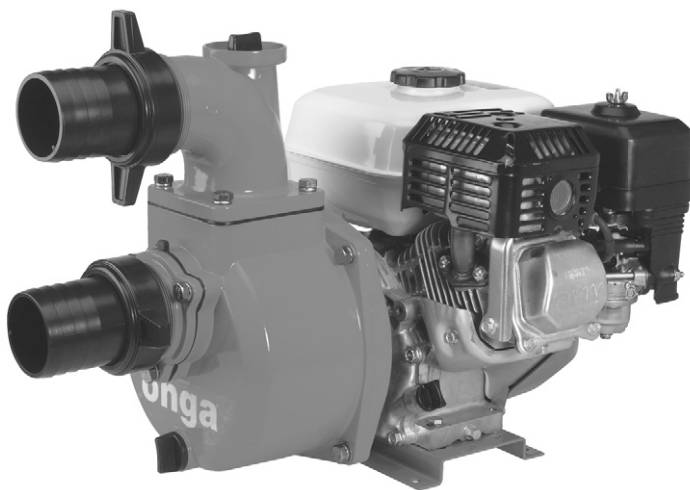




ONGA®

ENGINEMASTER **GP960**

ENGINE DRIVEN WATER TRANSFER SYSTEM



Should the installer or owner be unfamiliar with the correct installation or operation of this type of equipment, contact the distributor or manufacturer for correct advice before proceeding with installation or operation of the product

Distributed in NZ By:

ARGON®
DISTRIBUTORS LTD

Freephone 0508 634 341

**7 Monier Pl, Mt Wellington, Auckland
1060, New Zealand**

Relax - you've bought an onga ...

Congratulations on your decision to purchase an onga product. onga is one of the best known companies in its field, with a proud local and international reputation.

In fact, wherever people need to move water from one point to another - whether in industry, horticulture, agriculture or in and around the home - onga is a byword for reliability, value for money and technological innovation. So why does onga lead its field? Here are a few simple reasons ...

1. Continual Product Improvement

onga employ the best engineers both in Australia and around the world to develop new and better ways to pump and handle water.

2. Dedication to Quality

There is only one standard that we at onga set ourselves for both product quality and the quality of our service. That standard is excellence ... to have no-one better than us at what we do ... nothing short of that is acceptable.

3. A Fair Price

onga pumps are neither the cheapest nor the most expensive in their field. Our products do, on the other hand, always represent very good value for money - they always have and they always will.

4. Our Team of Dealers

We believe onga's hand picked authorised dealer network - throughout Australia and worldwide - are second to none. We invest a huge sum training them and supporting them. They are your link to us, and we value their expertise and trust.

OPERATING INSTRUCTIONS

Please read these instructions in full before installing and commissioning the pump unit.

Pump Protection

Warranty of these pumps is void unless they are housed correctly and protected from weather, floods, chemicals, dust, vermin, insects etc. Housing used should be weather-proof and well vented so that engine heat and exhaust fumes can escape. To obtain best possible performance, pumps should be installed as close to water as possible.

Suction and Discharge Pipes

Suction pipe should be laid so that it rises evenly from water source to pump. This makes priming easy and avoids airlocks.

Hoses should be the same size as the pump inlet and/or larger than the discharge port.

All pipe joints must be sealed to ensure they are airtight.

Priming

To prime pump, remove priming plug and fill pump and suction pipe with water. Pump is equipped with suction flap valve and should be capable of drawing air out of normal size suction pipes or hoses. Replace plug and start the pump. If the pump pumps a little and stops, turn the pump off, check suction pipe for possible leaks and repeat priming procedure until the pump operates satisfactorily.

Self priming pumps, when filled with water, will gradually draw air out of the suction line (depending on model) to a maximum vertical lift of 6 metres (20 ft). If priming a long or large diameter pipe, additional water may have to be added to the pump at 3 minute intervals.

Suction Limitations

Theoretically, no pump can lift water higher than 9 metres (30 ft) vertically, and the practical limit is approximately 6 metres (20 ft), depending on the installation.

The pump is equipped with an internal suction flap valve. If pump fails to prime, it could be due to a leak in the suction pipe, a worn impeller or too great a suction lift. Self priming pumps do not self prime when subject to a high discharge head. Under these conditions the suction flap valve should be removed and a foot valve installed on the end of the suction line.

Suction Strainer

For portable pump use, a suction hose strainer must be used. This removes the risk of gravel or large pieces of foreign matter entering and damaging the pump.

Type of Water

Pumps are capable of pumping septic tank effluent, sink wastes, small amounts of dirt or sand, drainage or polluted water and some industrial wastes. They are not designed to pump large quantities of foreign matter. If fluid contains large or stringy material, then an adequate suction strainer should be used.

If chemicals are to be pumped, compatibility of pump material should be checked with your local onga office.

SERVICE

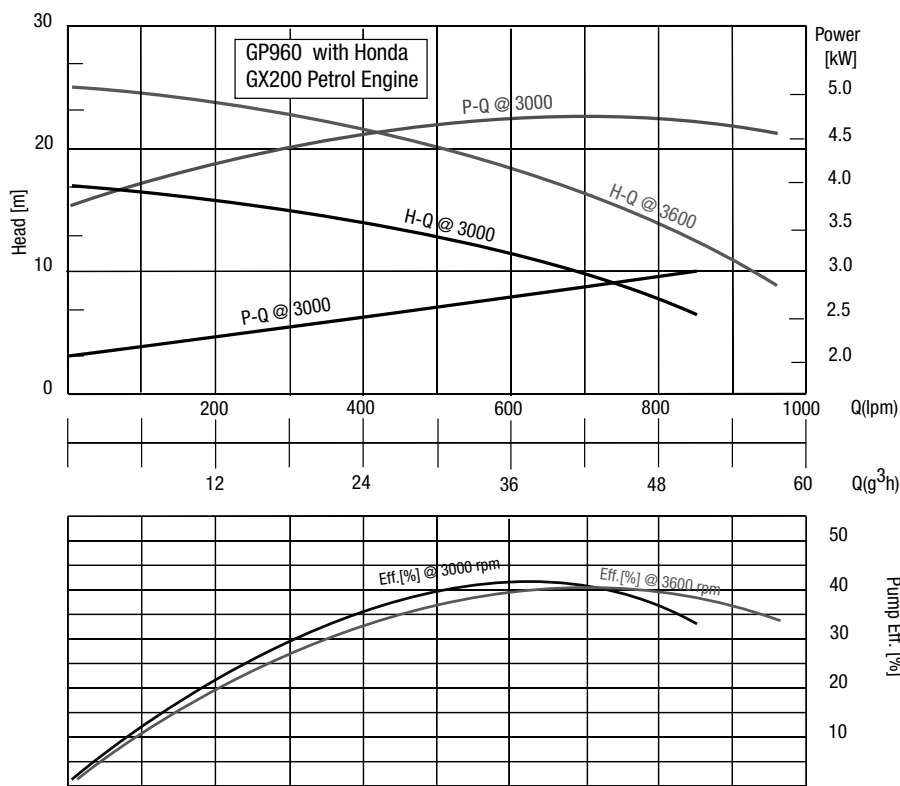
Pump runs but fails to pump water:

- 1) Check for an air leak in suction pipe.
- 2) The pump has not been filled with water.
- 3) Water has evaporated leaving pump dry.
- 4) Foreign matter has clogged the impeller or pipe.
- 5) Suction lift too high.

Engine

See instructions supplied by engine manufacturer. Be sure to initially put oil in engine and check level regularly. Low speeds extend engine life dramatically. We recommend for continuous pumping that the pump be operated at approximately 3000 r.p.m.

Be aware that unstable mounting practices may be hazardous to the operator and/or property.



Please note: All tests carried out with potable water @ ambient air temperature.

Spare parts

GP960

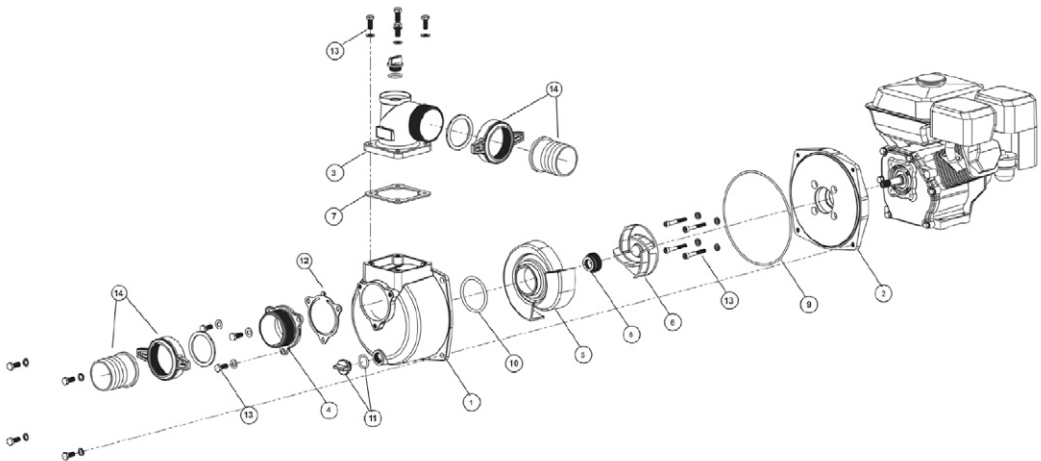
333314

333315

333317

333318

REF NO.	COMPONENT DESCRIPTION	PART NO.	
1	CASING	801000	1PC
2	YOKE - TO SUIT 45MM SEAL	801227	1PC
3	FLANGE - DELIVERY	801002	1PC
4	FLANGE - SUCTION	801003	1PC
5	DIFFUSER	705077	1PC
6	IMPELLER	705078	1PC
7	DISCHARGE GASKET	REF. 15	1PC
8	SEAL ASSEMBLY 45MM	705089	1PC
	SEAL KIT 40MM (INC. SEAL + 9, 10 & 12)	800889K	1PC
	SEAL KIT 45MM (INC. SEAL + 9, 10 & 12)	800917K	1PC
9	ORING - CASING	REF. 15	1PC
10	ORING - DIFFUSER	REF. 15	1PC
11	DRAIN PLUG	705084	1PC
12	CLACKER CHECKVALVE	REF. 15	1PC
13	BOLT KIT (CASING/SUCTION/DISCHARGE)	705088K	1PC
14	NUT & TAIL KIT (INC. HOSE CLIP)	705094K	1PC
15	GASKET KIT (INC. 7, 9, 10 & 12)	705088K	1PC



This image shows a full page of white paper with horizontal dashed lines, typical of primary-ruled notebook paper. The lines are evenly spaced and run across the width of the page. There are no margins, text, or other markings on the paper.

IMPORTANT

Please attach your sales invoice/docket here as proof of purchase should warranty service be required.

Please do not return Warranty - Retain for your records.

Purchased From

Purchase Date..... Serial No..... Model No.....



1-21 Monash Drive,
Dandenong South, Vic 3175

Australia

National Customer Service: Phone: 1300 137 344

Fax: 1800 006 688

National Dealer Locator: Phone: 1800 664 266

Email: au.sales@pentair.com

Web: www.pentair.com.au

Distributed in NZ By:



Freephone 0508 634 341

7 Monier Pl, Mt Wellington, Auckland 1060, New Zealand

© Information contained here-in remains the property of Pentair Pty Ltd. Any reproduction, display, publication, modification or distribution is strictly prohibited without the prior written permission of Pentair Pty Ltd.

Disclaimer: Pentair reserves the right to change product specifications and products details. All product images are for reference purposes only and may not represent actual and/or current product.