



## DJS SERIES

### Stainless steel jet assisted pumps

The Davies DJS series stainless steel pumps have the incorporated jet/venturi system for long or deep suction applications.

Most commonly used in house supply applications where the water source is situated below the pump. I.e. underground tanks, shallow wells or rivers, creeks and dams.

#### Features

- 304 stainless steel impeller, pump body and seal plate
- Long life silicon carbide/carbon seal
- Glass fibre reinforced noryl diffuser/venturi

SMALL HOME



LARGE HOME



SHOWER



IRRIGATION



# DJS SERIES

## TECHNICAL

DAVIES DJS SERIES						
Model	Hp	Kw (P2)	Volts	Phase	Amps	Cap Mfd
DJS80	0.8	0.6	230	1	3.0	20
DJS100	1.0	0.75	230	1	4.5	20
DJS120	1.2	0.9	230	1	5.4	20

### Typical Applications:

- Water storage tank to house pressure boosting
- Water transfer from shallow well/bore to storage tank

### Pump Type:

Self-priming single impeller pump with jet and venturi system for pumping clean water without suspended solids, non-abrasive, non-corrosive to the materials used in the pump as listed below.

### Motor Type:

- Totally enclosed, fan cooled.
- Rated speed: 2800 RPM
- Single phase voltage range: 220-240V
- PSC (permanent capacitor)
- Insulation: Class F
- Protection: IP55
- Overload protection: Internal thermal overload auto rest

### Operation limitations:

- Ambient temperature range: -15°C to +40°C
- Maximum liquid temperature range: 45°C
- Maximum working pressure: 6.0Bar

## CONSTRUCTION MATERIALS

Description	Material
Pump Casing	304 Stainless steel
Seal Plate	304 Stainless steel
Impeller	304 Stainless steel
Shaft	304 Stainless steel
Mechanical seal	Silicon carbide/carbon/EPDM
Body O Ring	EPDM
Motor mount bracket	Aluminium

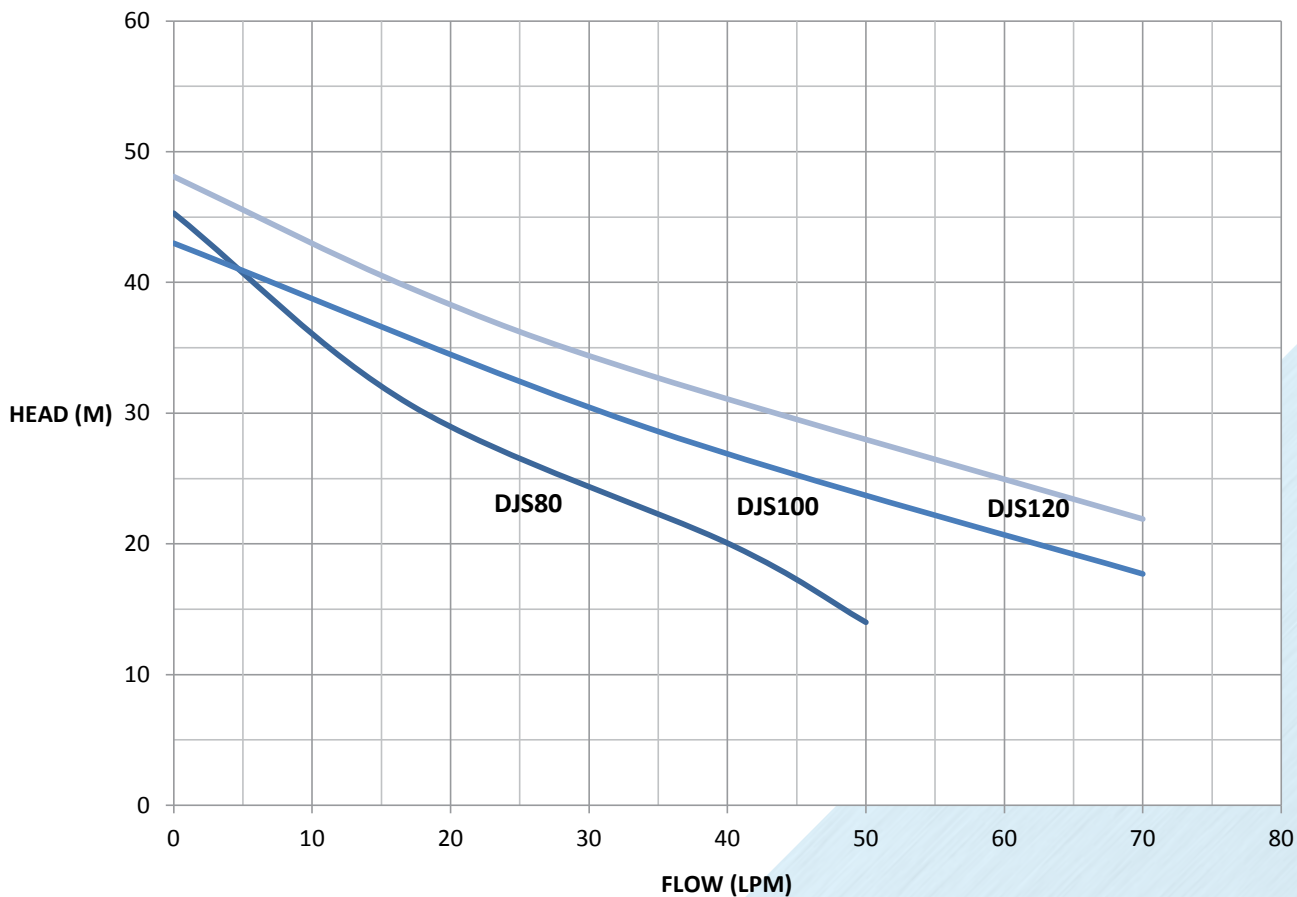


**PERFORMANCE**

PERFORMANCE DATA									
Model	m <sup>3</sup> /h	0	0.6	1.2	1.8	2.4	3	3.6	4.2
	L/M	0	10	20	30	40	50	60	70
DJS80	H(m)	45	36	28	24	20	14		
DJS100		43	37	34	30	26	22	20	17
DJS120		48	42	37	33	30	27	25	22



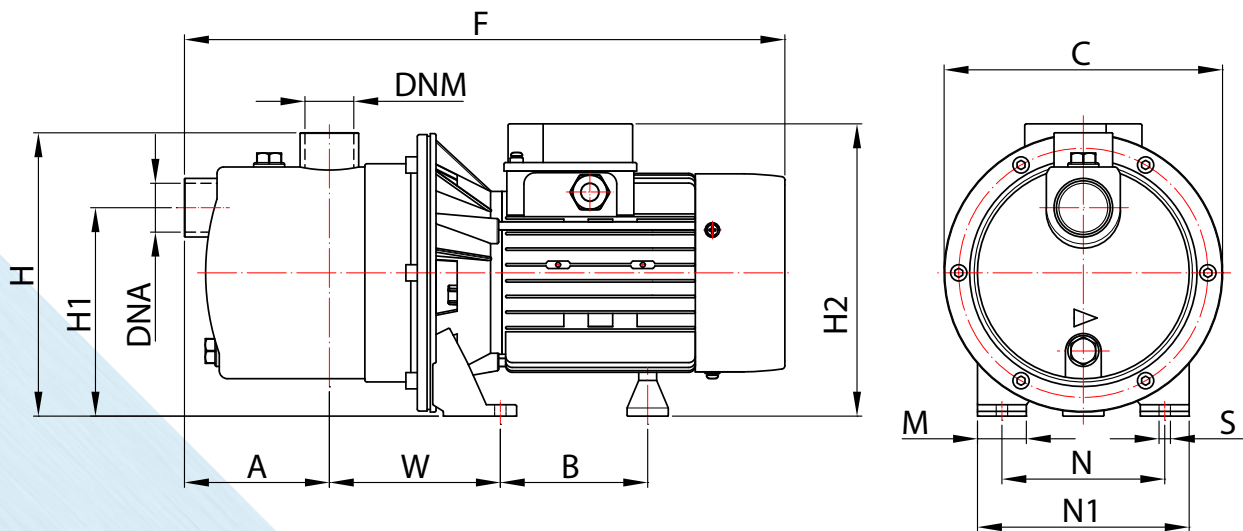
**DJS series**





## DIMENSIONS

DAVIES DJS SERIES DIMENSIONS																
Model	A	B	C	F	H	H1	H2	n	s	W	DNA	DNM	KG	n1	m	
DJS80	90	100	170	380	175	127	200	100	8	105	1"	1"	8.4	130	30	
DJS100	100	75	210	425	212	158	212	120	8	140	1 1/4"	1"	11.8	160	40	
DJS120	100	75	210	425	212	158	212	120	8	140	1 1/4"	1"	12.2	160	40	



For your nearest dealer please contact Argon Distributors: 0508 634 341

While every endeavor has been made to publish the correct details, no responsibility will be taken for errors, omissions or changes in product specifications. Davies pumps and the 'dp' logo are registered trademarks of Argon Distributors.