

SHURFLO® 5000 SERIES

5 GPM Diaphragm Pumps

Features & Benefits

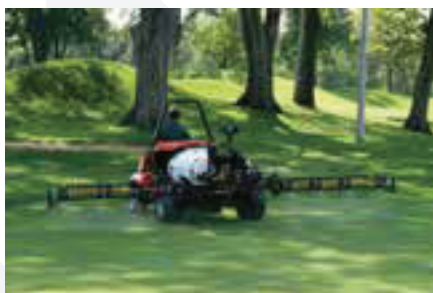
- Delivers 5.3 GPM [20.1 L/min] free flow
- Field-proven pump head design
- Driven by a 12-volt, SHURflo built sealed motor
- Self-priming capabilities, up to 8 feet [2.4 m]
- Santoprene® diaphragm for chemical resistance and maximum life
- Viton® valves provide maximum chemical resistance
- Automatic demand versions with built-in pressure switch, set at 60 PSI [4.14 bar]
- Bypass versions set at 90 psi [5.86 bar], for applications where a demand switch is not desired
- Available in the same footprint as other SHURflo pumps, allowing users to upgrade to a higher performance on existing installations
- Available with male 1/2" NPS or female 1/2" NPT ports



5059-1310-D011



5059-3611-D011



Designed for heavy-duty spraying and fluid transfer applications:

- Spot spraying
- Liquid fertilizer application
- Multi-tip spraying
- Foam marking
- General purpose



OEM's #1 choice in Diaphragm pumps for Agriculture and Turf Maintenance Applications



To order retail box versions, change part number suffix from "D011" to "D012".

SHURFLO® 5000 SERIES

Specifications

Order Information

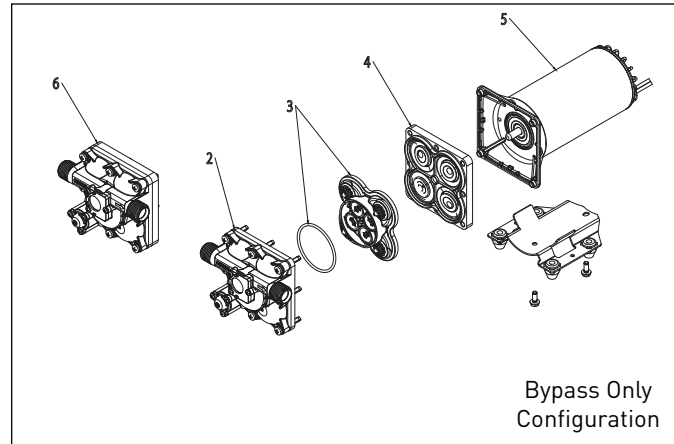
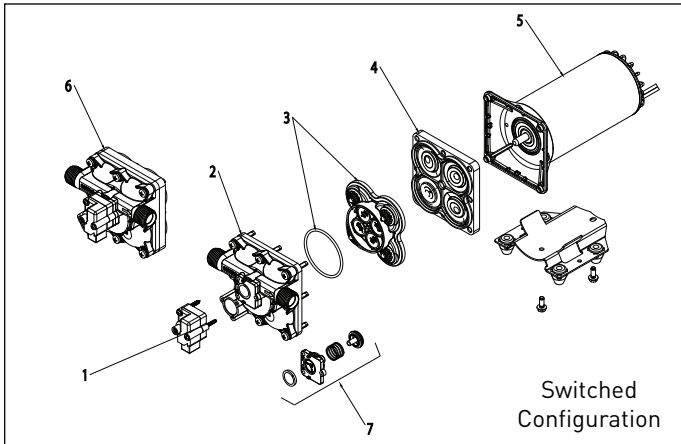
Part #	Max GPM (L/MIN)	Max PSI (BAR)	Port Size	Max Draw	Packaging
5059-1310-D011	5.3 (20.1)	60 (4.14)	1/2" NPTF	17.0	Brown Box
5059-1311-D011	5.3 (20.1)	60 (4.14)	1/2" NPSM*	17.0	Brown Box
5059-1310-D012	5.3 (20.1)	60 (4.14)	1/2" NPTF	17.0	Retail Box
5059-1311-D012	5.3 (20.1)	60 (4.14)	1/2" NPSM*	17.0	Retail Box
5059-3610-D011	5.3 (20.1)	80 (5.52)	1/2" NPTF	20.9	Brown Box
5059-3611-D011	5.3 (20.1)	80 (5.52)	1/2" NPSM*	20.9	Brown Box
5059-3610-D012	5.3 (20.1)	80 (5.52)	1/2" NPTF	20.9	Retail Box
5059-3611-D012	5.3 (20.1)	80 (5.52)	1/2" NPSM*	20.9	Retail Box

* 1/2" -14 American National Standard Straight Pipe Thread

Performance

Model	PSI	GPM	BAR	L/min	Amps
5059 Series Switched	0	5.3	0.0	20.1	6.5
	10	4.7	0.7	18.0	9.0
	20	4.3	1.4	16.5	11.8
	30	4.1	2.1	15.5	12.4
	40	3.8	2.8	14.6	14.0
	50	3.6	3.4	13.6	15.4
5059 Series Bypass	60	3.4	4.1	12.9	17.0
	0	5.3	0.0	20.1	6.5
	10	4.7	0.7	17.8	9.0
	20	4.3	1.4	16.3	10.2
	30	4.1	2.1	15.5	12.0
	40	3.4	2.8	12.9	13.5
	50	2.6	3.4	9.8	15.2
	60	1.8	4.1	6.8	16.9
	70	1.1	4.8	4.2	18.5
	80	0.4	5.5	1.5	20.1
90	0.0	6.2	0.0	20.9	

Replacement Kits



Model	1 Switch Only	2 Upper Housing	3 Valve Assembly	4 Drive Assembly	5 Motor	6 Pump Head	7 Check Valve
5059-1310-xxxx	94-910-02	94-910-11	94-910-05	94-910-04	94-71-000-17	94-910-10	94-910-03
5059-1311-xxxx	94-910-02	94-910-01	94-910-05	94-910-04	94-71-000-17	94-910-00	94-910-03
5059-3610-xxxx	N/A	94-910-15	94-910-05	94-910-04	94-71-000-17	94-910-13	N/A
5059-3611-xxxx	N/A	94-910-14	94-910-05	94-910-04	94-71-000-17	94-910-12	N/A